

## RETAIL OR OFFICE BUILDING FOR SALE

**BUILDING SIZE:** Approximately 12,000 GSF  
plus 400 SF Loading Dock

- FEATURES:**
- Walking distance to Downtown Princeton
  - Great visibility
  - Heart of Palmer Square
  - Architecturally significant
  - On-site parking for 6 cars
  - Listed on the State and National Registers of Historic Places

# 20 PALMER SQUARE PRINCETON, NJ 08542



**FOR MORE INFORMATION PLEASE CONTACT:**

**Alec Monaghan**

((O) 732.509.2845

(C) 609 558 9886

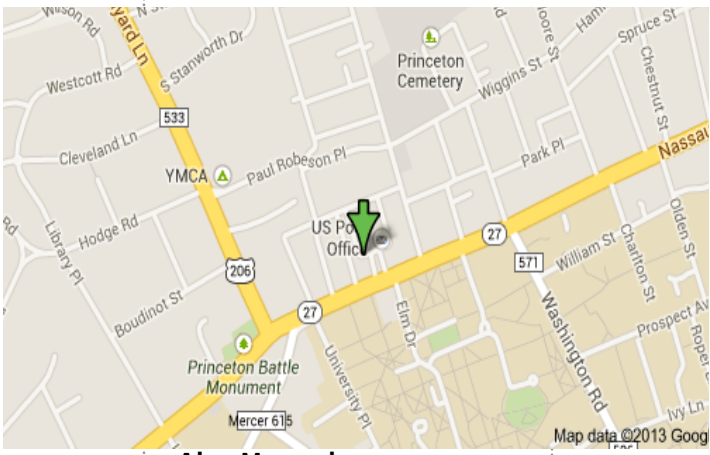
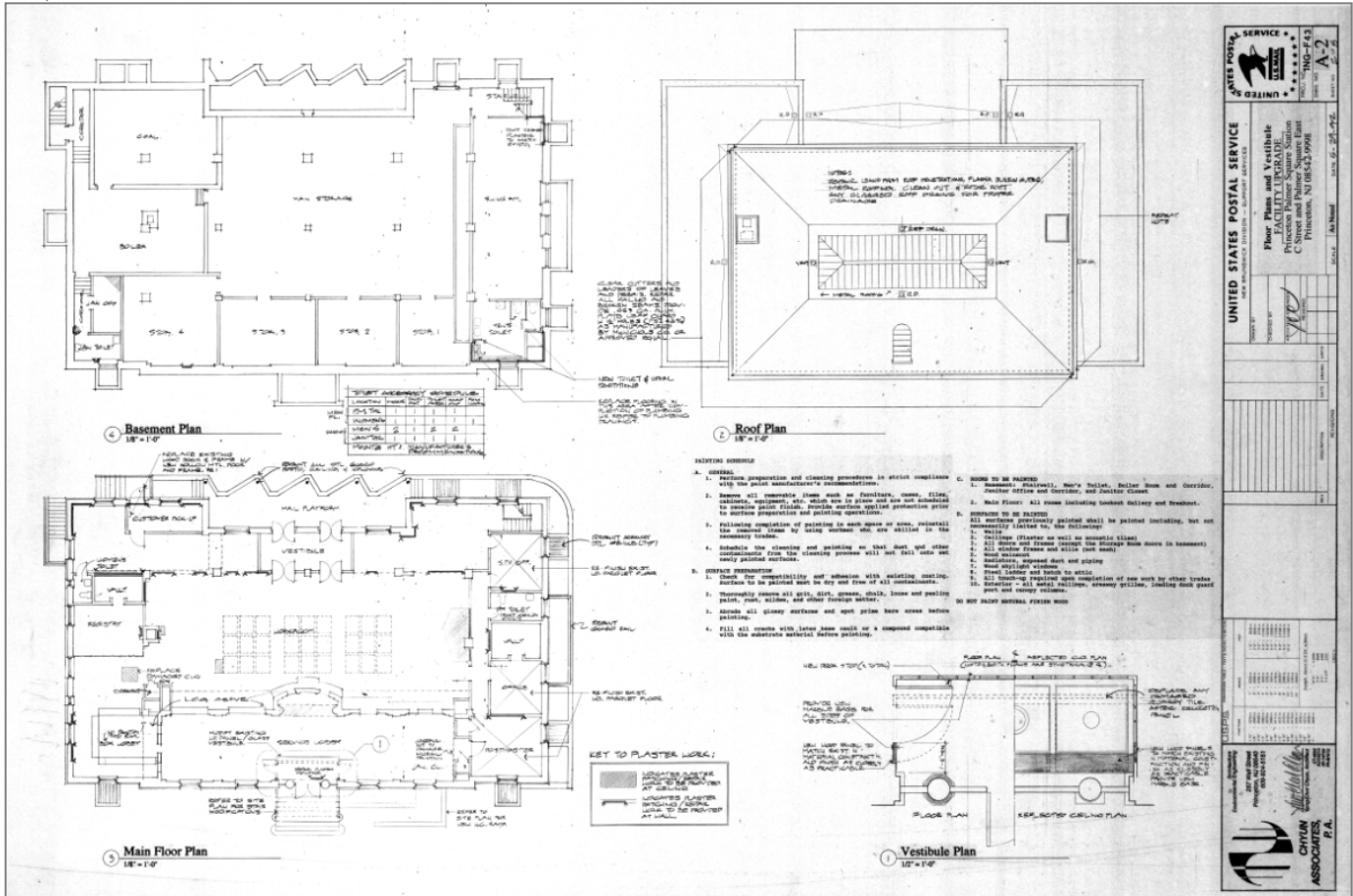
[alec.monaghan@cbre.com](mailto:alec.monaghan@cbre.com)

**CBRE**

# 20 PALMER SQUARE PRINCETON, NJ 08542 OFFICE OR RETAIL SPACE FOR SALE

NOW AVAILABLE : 20 PALMER SQUARE, PRINCETON, NJ

## FLOOR PLANS

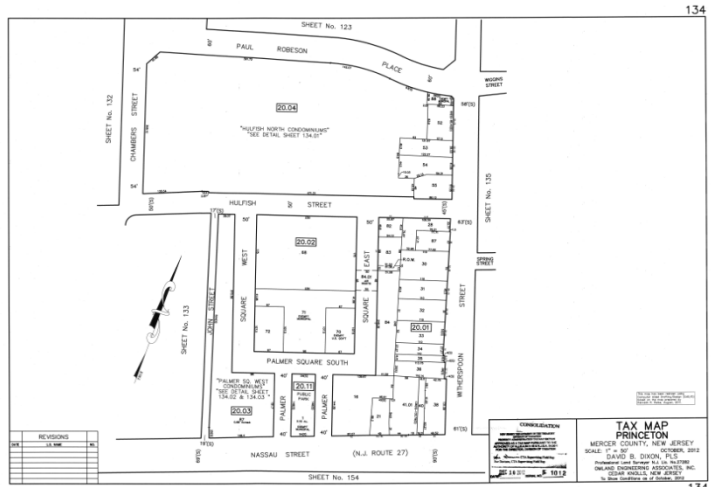


**Alec Monaghan**

(O) 732.509.2845

(M) 609.558.9886

alec.monaghan@cbre.com



CBRE, Inc. | Licensed Real Estate Broker | Two Tower Center Boulevard | 20th Floor | East Brunswick, NJ 08816 | www.cbre.com

© 2012 CBRE, Inc. This information has been obtained from sources believed reliable. We have not verified it and make no guarantee, warranty or representation about it. Any projections, opinions, assumptions or estimates used are for example only and do not represent the current or future performance of the property. You and your advisors should conduct a careful, independent investigation of the property to determine to your satisfaction the suitability of the property for your needs.